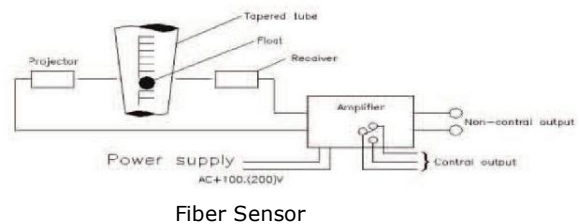
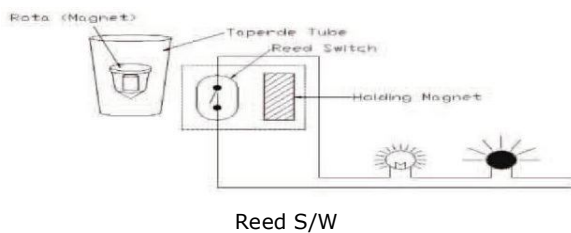


Panel-Mounting Flowmeters FKOI series

These panel-mounting flow meters are used in various testing equipments and semi conductors. They are usable for both liquids and gases. Users have an option to pick suitable material for use with corrosive liquids or gases. They have needle valve attached type which can adjust flow rate according to application and types which can be applied to pressure change.

FKOI	Code	Description
Connection Length	A	130mm (C to C)
	C	200mm (C to C)
	D	240mm (C to C)
	E	280mm (C to C)
Material	1	SS304
	2	SS316
	P	PVC
	T	PTFE (Without Valve)
	TV	Option PTFE (With Valve)
Option	E1	1 SPDT Contact (Fiber Sensor)
	E2	2 SPDT Contact (Fiber Sensor)
	R1	1 SPDT Contact (Reed S/W)
	R2	2 SPDT Contact (Reed S/W)

FKOI with dry contact:



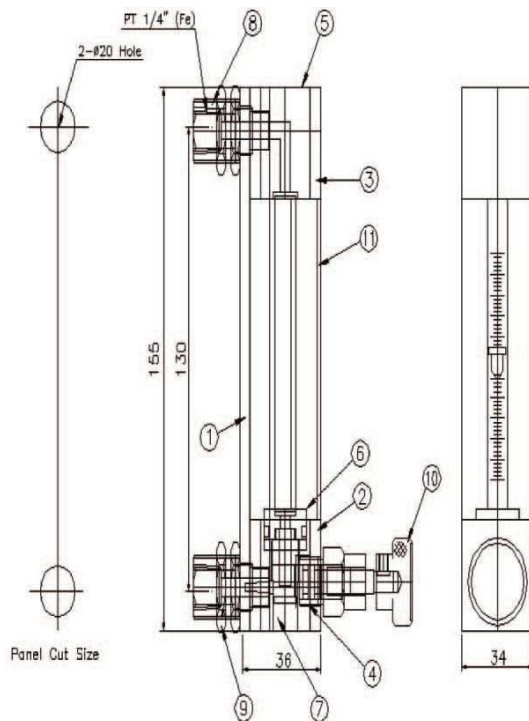
Panel-Mounting Purge Flowmeters FKOI-A-1 series



FKOI-A-1

These panel-mounting flow meters are used in various testing equipments and semi conductors. They are usable for both liquids and gases. Users have an option to pick suitable material for use with corrosive liquids or gases. They have needle valve attached type which can adjust flow rate according to application and types which can be applied to pressure change, (connection to connection : 130mm)

Structure & Dimensions:



No.	Title.	Material.
1	Main Plate	AL.C
2	Bottom Block	AL.C
3	Top Block	AL.C
4	Bottom Body	SS304/316/316L
5	Top Body	SS304/316/316L
6	Ring	B.S / SS304
7	Shaft	SS304/316/316L
8	Nipple	SS304/316/316L
9	Double Nut	Brass
10	Needle Valve	SS304/316/316L
11	Cover	Acryl



Flow Rate Table

Alarm (PAU)		Alarm (Reed Switch)			
AIR(1atm.0°C)	Water	AIR(1atm.0°C)	Alarm setting range	Water	Alarm setting range
4.0~20 NmL/min	/	/	/	/	/
6.0~30 NmL/min					
10~50 NmL/min					
10~100 NmL/min					
20~200 NmL/min					
30~300 NmL/min					
50~500 NmL/min	5.0~50 mL/min	50~500 NmL/min	1Q0~4Q0 NmL/min	5.0~50 mL/min	10~40 mL/min
0.1~1.0 NmL/min	10~100 mL/min	0.1~1.0 NL/min	0.2~0.8 NL/min	10~100 mL/min	20~80 mL/min
0.2~2.0 NL/min	20~2Q0 mL/min	0.2~2.0 NL/min	0.4~1.6 NL/min	20~200 mL/min	40~160 mL/min
0.3~3.0 NL/min	30~300 mL/min	0.3~3.0 NL/min	0.6~2.4 NL/min	30~300 mL/min	60~240 mL/min
0.5~5.0 NL/min	50~500 mL/min	0.5~5.0 NL/min	0.1~4.0 NL/min	50~500 mL/min	100~400 mL/min
1.0~10 NL/min	0.1~1.0 L/min	1~10 NL/min	2~8.0 NL/min	0.1~1.0 L/min	0.2~0.8 L/min
2.0~20 NL/min		4.0~20 NL/min	4.0~16 NL/min		
3.0~30 NL/min		6.0~30 NL/min	6.0~24 NL/min		
5.0~50 NL/min		10~50 NL/min	10~40 NL/min		
	0.3~1.5 L/min				
	0.4~2 L/min				

Standard Specification

Measuring Object		Liquids and gas	
Measuring Range	Air	Min. 4~20 mL/min. Max. 5~50 NL/min.	Air at 0 °C, 1atm
	Water	Min. 5~50 mL/min. Max. 0.15" 1.5 L/min.	
Range ability		10:1	10:2 occasionally
Accuracy		±2% of F.S	GAS (±2.5% of F.S)
Max. Oper. Press.		10 kgf/cm ² G (0.98MPaG)	When packing PTFE is used, Max. Oper. Press, is 5 kgf/crfG
Max. Oper. Temp.		120 °C	Standard products have the packing materials made of NBR, so Max. Temperature is 801)
Material		STD	Option (SS304/SS316/SS316L)
	Body	SS304 (STD)	SS316, SS316L
	Tapered tube	Pyrex glass	
	Packing	NBR (max. 80°C)	Viton (max. 120X:) PTFE (max. 120t:) EPDM (max. 801:)
	Support	Aluminum	
	Cover	Acryl	
Connection	Std.	Rc1/4"	
	Opt.	Rc1/8", NPT1/4", NPT3/8"	
Mounting	Std.	Lock-nut mounting onto panel front	
	Opt.	Bezel installation, Panel-rear installation, Stand provided etc.	
Approx. weight (STD type)		0.5 kg	

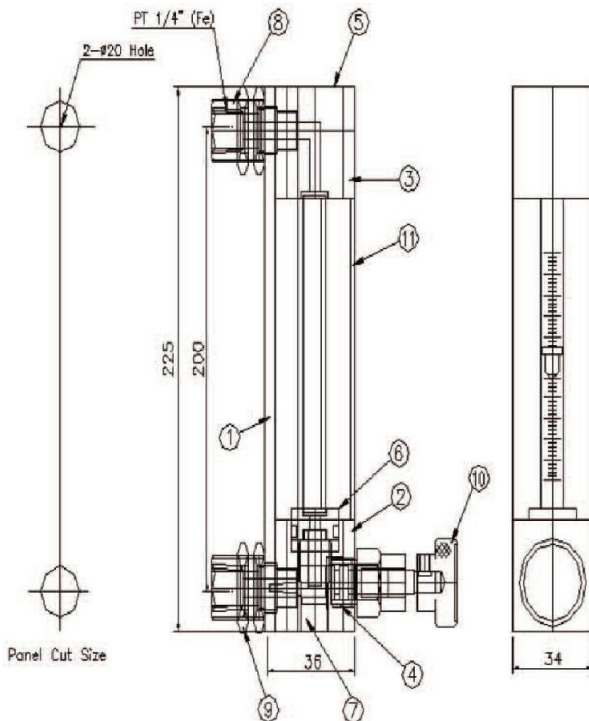
Panel-Mounting Purge Flowmeters FKOI-C -1 series



FKOI-C-1

These panel-mounting flow meters are used in various testing equipments and semi conductors. They are usable for both liquids and gases. Users have an option to pick suitable material for use with corrosive liquids or gases. They have needle valve attached type which can adjust flow rate according to application and types which can be applied to pressure change (connection to connection : 200mm).

Structure & Dimensions:



No.	Title.	Material.
1	Main Plate	ALC
2	Bottom Block	ALC
3	Top Block	ALC
4	Bottom Body	SS304/316/316L/PTFE
5	Top Body	SS304/316/316L/PTFE
6	Ring	B.S/SS304
7	Shaft	SS304/316/316L/PTFE
8	Nipple	SS304/316/316L/PTFE
9	Double Nut	Brass
10	Needle Valve	SS304/316/316L/PTFE
11	Cover	Acryl



Flow Rate Table

Alarm (PAU)		Alarm (Reed Switch)			
AIR(1atm.0°C)	Water	AIR(1atm.0°C)	Alarm setting range	Water	Alarm setting range
5.0~50 NmL/min	/	/	/	/	/
10~100 NmL/min					
20~200 NmL/min					
30~300 NmL/min					
50~500 NmL/min	-	50~500 NmL/min	100~400NmL/min	-	-
0.1~1.0 NmL/min	10~100mL/min	0.1~1.0 NL/min	0.2~0.8 NL/min	10~100 mL/min	20~80 mL/min
0.2~2.0 NL/min	20~200 mL/min	0.2~2.0 NL/min	0.4~1.6 NL/min	20~200 mL/min	40~160 mL/min
0.3~3.0 NL/min	30~300 mL/min	0.3~3.0 NL/min	0.6~2.4 NL/min	30~300 mL/min	60~240 mL/min
0.5~5.0 NL/min	50~500 mL/min	0.5~5.0 NL/min	0.1~4.0 NL/min	60~500 mL/min	100~400 mL/min
1.0~10 NL/min	0.1~1.0 L/min	1.0~10 NL/min	2.0~8.0 NL/min	0.1~1.0 L/min	0.2~0.8 L/min
2.0~20 NL/min		2.0~20 NL/min	4.0~16 NL/min		
3.0~30 NL/min		3.0~30 NL/min	6.0~24 NL/min		
5.0~50 NL/min		5.0~50 NL/min	10~50 NI/min		
6.0~60 NL/min	-	5.0~50 NL/min	10~50 NI/min	0.3~3.0 L/min	0.5~2.5 L/min

Standard Specification

Measuring Object		Liquids and gas	
Measuring Range	Air	Min. 5~50 mL/min. Max. 5~50 NL/min.	Air at 0F, 1atm
	Water	Min. 10~ 100 mL/min. Max. 0.3~3 L/min.	
Range ability		10:1	10:2 occasionally
Accuracy		±2% of F.S	GAS (±2.5% of F.S)
Max. Oper. Press.		10 kgf/cm ² G (0.98MPaG)	
Max. Oper. Temp.		120°C	Standard products have the packing materials made of NBR, so Max. Temperature is 80°C
Material		SS304 (STD)	Option (SS316/SS316L/TEFLON)
	Body	SS304	SS316/SS316L/TEFLON
	Tapered tube	Pyrex glass	
	Packing	NBR (max. 80°C)	Viton (max. 120°C) PTFE (max. 120°C) EPDM (max. 80°C)
	Support	Aluminum	
	Cover	Acryl	
Connection	Std.	Rc1/4"	
	Opt.	Rc3/8", NPT1/4", NPT1/2"	
Mounting	Std.	Lock-nut mounting onto panel front	
	Opt.	Bezel installation, Panel-rear installation, Stand provided etc.	
Approx. weight (STD type)		0.8 kg	

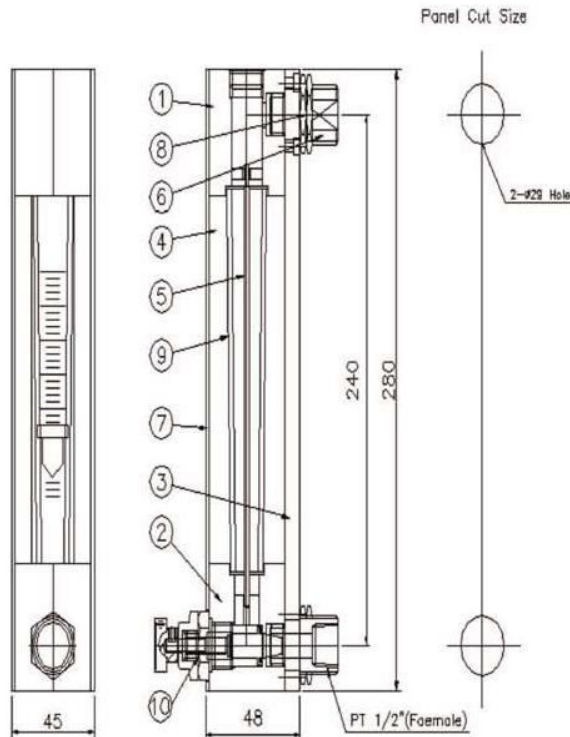
Panel-Mounting Purge Flowmeters FKOI-D -1 series



FKOI-D-1

These panel-mounting flow meters are used in various testing equipments and semi conductors. They are usable for both liquids and gases. Users have an option to pick suitable material for use with corrosive liquids or gases. They have needle valve attached type which can adjust flow rate according to application and types which can be applied to pressure change (connection to connection: 240mm).

Structure & Dimensions:



No.	Title.	Material.
1	Top Block	SS304/316/316L
2	Bottom Block	SS304/316/316L
3	Plate	ALC
4	Support Bar	ALC
5	Guide Bar	SS304/316/316L
6	Screw Nut	Brass
7	Nut Set	SS304/316/316L
8	Glass	Pyrex
9	Cover	Acryl
10	Needle Valve	SS304/316



Flow Rate Table:

AIR (1atm, Ot:)	Water
5~50 NL/min	0.2 ~ 2 L/min
8~80 NL/min	0.4 ~ 4 L/min
10~100 NL/min	1 ~ 10 L/min
20~200 NL/min	1.5 ~ 15 L/min
25~250 NL/min	

Standard Specification:

Measuring Object		Liquids and gas	
Measuring Range	Air	Min. 5~50 NL/min. Max. 25~250 NL/min.	Air at 0°C, 1atm
	Water	Min. 0.2~2 l/min. Max. 1.5~15 L/min.	
Range ability		10:1	Option 6:1
Accuracy		±2% Of F.S	GAS (±2.5% of F.S)
Max. Oper. Press.		10 kgf/cm ² G (0.98MPaG)	
Max. Oper. Temp.		120°C	Standard products have the packing materials made of NBR, so Max. Temperature is 80°C
Material		STD	Option (Specify by model code)
	Body	SUS304 (STD)	SUS316, SS316L, Teflon, PVC
	Tapered tube	Pyrex glass	
	Packing	NBR (max. 80°C)	Viton (max. 120°C) PTFE (max. 120°C)
	Support	ALC	PVC, PTFE
	Cover	Acryl	
Connection	Std.	Rc 1/2"	
	Opt.	1/2" NPT, JIS 10K FF etc.	
Mounting	Std.	Lock-nut mounting onto panel front	
	Opt.	Flange pipe mounting, Stand provided etc.	
Approx. weight (STD type)		1.5 kg	

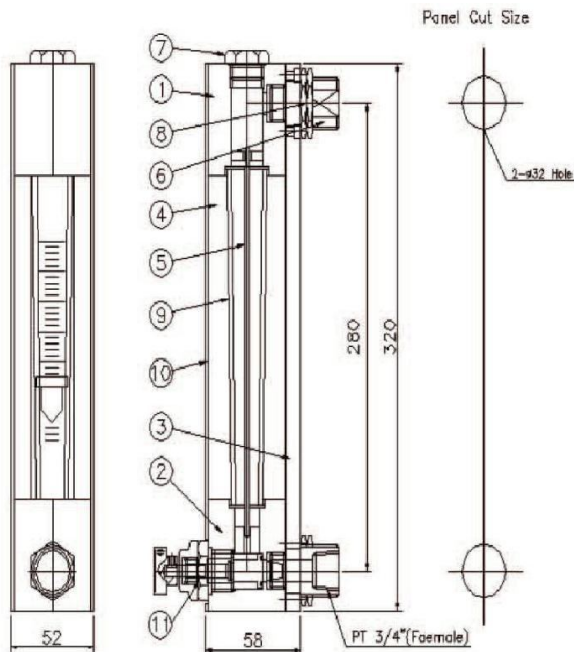
Panel-Mounting Purge Flowmeters FKOI-E -1 series



FKOI-E -1

These panel-mounting flow meters are used in various testing equipments and semi conductors. They are usable for both liquids and gases. Users have an option to pick suitable material for use with corrosive liquids or gases. They have needle valve attached type which can adjust flow rate according to application and types which can be applied to pressure change (connection to connection: 280mm).

Structure & Dimensions:



No.	Title.	Material.
1	Top Block	SS304/316/316L
2	Bottom Block	SS304/316/316L
3	Plate	ALC
4	Support Bar	SUS304
5	Guide Bar	SS304/316/316L
6	Screw Nut	None.
7	Cap	SS304/316/316L
8	Nut Set	Brass
9	Glass	Pyrex
10	Cover	Acryl
11	Needle Valve	SS304/316/316L



Flow Rate Table:

AIR(1 atm. 0°C)	Water	AIR(1 atm. 0°C)	Alarm setting range	Water	Alarm setting range
5.0~50 NL/min	0.2~2.0 L/min	5.0~50 NL/min	10~40 NL/min	0.3~3.0 L/min	0.6~2.4 L/min
10~100 NL/min	0.3~3.0 L/min	10~100 NL/min	20~80 NL/min		
20~200 NL/min	0.5~5.0 L/min	20~200 NL/min	40~160 NL/min	0.5~5.0 L/min	1.0~4.0 L/min
30~300 NL/min	1.0~10 L/min	30~300 NL/min	60~240 NL/min	1.0~10 L/min	2.0~8.0 L/min
40~400 NL/min	1.5~15 L/min	40~400 NL/min	80~320 NL/min	1.5~15 L/min	3.0~12 L/min
50~500 NL/min	2.0~20 L/min	50~500 NL/min	100~400 NL/min	2.0~20 L/min	4.0~16 L/min
60~600 NL/min	3.0~30 L/min	60~600 NL/min	120~480 NL/min	3.0~30 L/min	6.0~24 L/min

Standard Specification:

Measuring Object		Liquids and gas	
Measuring Range	Air	Min. 5 ~50 NL/min. Max. 60~600 NL/min.	Air at 0°C, 1 atm
	Water	Min. 0.2~2.0 L/min. Max. 3.0~30 L/min.	
Range ability		10:1	
Accuracy		±3% F/S	
Max. Oper. Press.		10 kgf/cm ² G (0.98MPaG)	
Max. Oper. Temp.		120°C	Standard products have the so Max. Temp is 80°C packing materials made of NBR
Material		Std.	Option (SS316.SS316L)
	Body	SUS304 (STD)	SUS316, PVC
	Tapered tube	Pyrex glass	
	Packing	NBR (max 80°C)	Viton (max 120°C) EPDM (max 80°C)
	Support	SUS304	
	Cover	Acryl	
Connection	Std.	PT3/8", NPT3/8" NPT1/2", PT 3/4" PT1"	
	Opt.	JIS10KFF etc.	
Mounting	Std.	Lock-nut mount onto panel front. Bezel installation Panel-rear installation	
	Opt.	Stand provided Flange pipe tube installation	
Weight (std. type)		4.0 kg	